

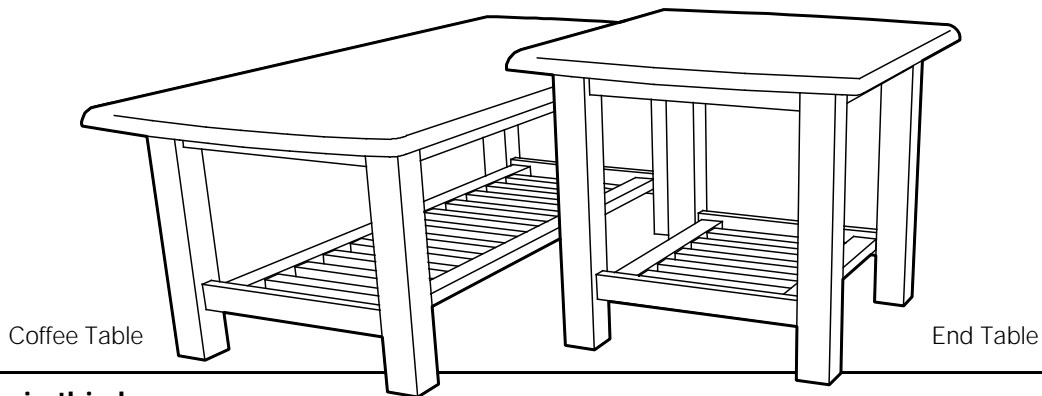
# Assembly Instructions

# FUTON ACCESSORIES CORONA TABLE

This instruction shows Coffee Table assembly. Procedure is the same for both sizes.

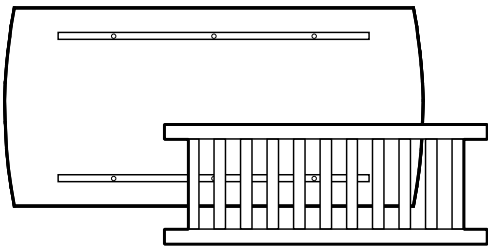
N&D-0503

## 1 Assembled view

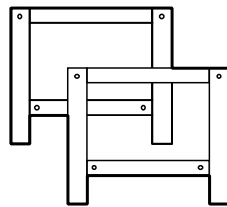


## 2 Parts in this box

Table Top (Apron attached) x 1 Piece

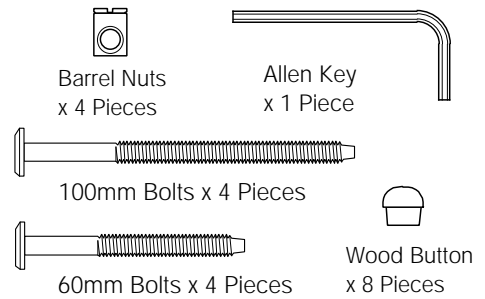


Magazine Shelf x 1 Piece



Leg Frame assembly x 2 Pieces

Hardware in this box



## 3 Assembly Procedure

1. Turn the Table Top upside down as shown on diagram. Be sure that the Table Top is laying on a flat smooth surface.
2. Attach the Leg Frames to the Apron using the longer Bolts and Barrel nuts. - LEAVE BOLTS VERY LOOSE!
3. Fix the Shelf Frame to the Leg Frame using the shorter Bolts. Nuts are already fixed inside the magazine shelf.
4. When all parts are assembled, gently tighten all the Bolts. Finally lightly tap the Wood Buttons into the bolt holes.

### Helpful Tips: Fastening of Bolts

- ✓ Check that all holes are free of wood chips and sawdust.
- ✓ A screwdriver will help in aligning the Barrel Nut hole with the Bolt.
- ✓ Screw the Bolt in gently to avoid stripping the threads.

